

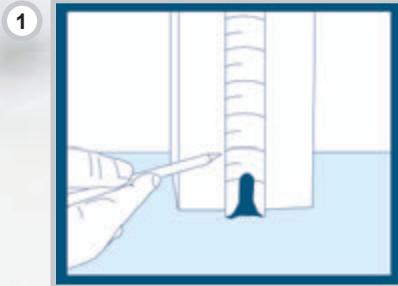


**TRIAD**  
VINYL FENCE & RAILING  
www.triadvinyl.com

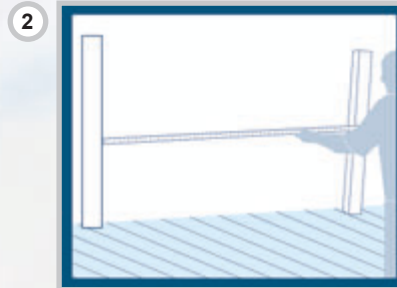


## RAIL INSTALLATION GUIDE

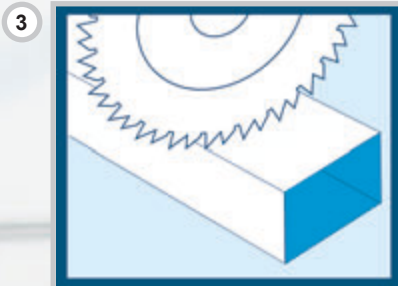
### Top and Bottom Rail Installation



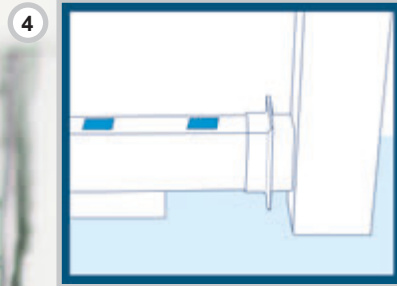
1 Determine the level placement of the bottom rail making sure that there is no greater than a 2" space from the bottom of the rail to the top of the standing level surface. At this point mark the mounting surface using a pencil.



2 Measure the opening at the location where the bottom rail is to be installed.



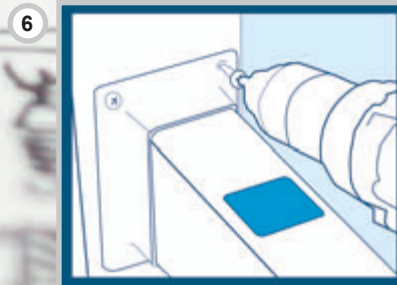
3 When trimming for installation, cut an even amount of material from each side. The aluminum insert and the vinyl rail should be cut to the same length. You can either cut both the aluminum and vinyl at the same time or individually.



4 Slide brackets onto bottom rail. Position rail at required height. Note: It is helpful to use a spacer to support rail at proper height.

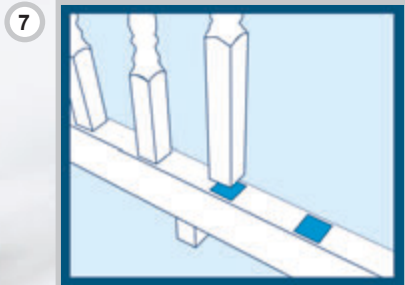


5 Add center support to the underside of the bottom rail.  
**NOTE:** If bottom rail has optional metal attach center support to the center of the bottom rail using screws provided. Drill (2) 3/8" weep holes.

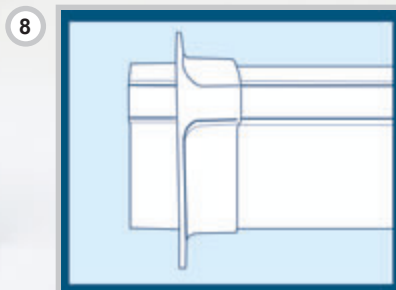


6 Slide the bottom rail into place making sure that the rail is plumb, square, and level (with the exception of a stair railing section). Fasten brackets to post by screwing through the brackets into the vinyl sleeved posts using self-tapping screws.

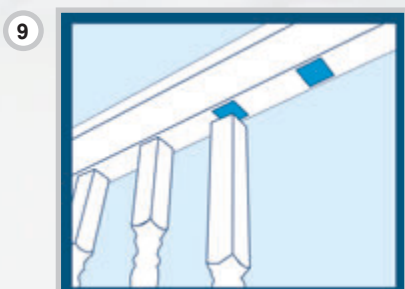
CONTINUED ON BACK



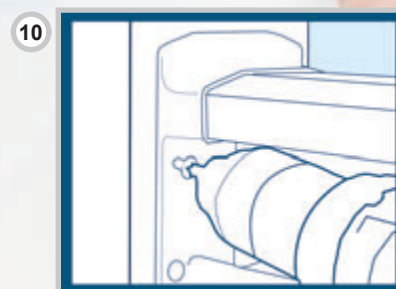
7 If needed cut the balusters to the desired height. Install each baluster into each routed hole in the bottom rail.



8 Slide brackets onto the top rail.



9 Insert balusters into routed holes in the top rail starting at one end and working your way to the opposite end. Installing one baluster at a time, allow the rail to drop down onto the baluster.



10 Establish the height of the top rail. Make sure that the top rail is level, plumb and square. Fasten brackets to post by screwing through the brackets into the vinyl sleeved posts using self-tapping screws.



11 Once the top and bottom rails are both in place fasten them to the brackets by screwing through each side of the brackets into the sides of the rail.



12 Place post cap onto post.



**ESTABLISHED 2001**

P.O. Box 189 • Rural Hall, NC 27045

phone: 336.969.0559 • fax: 336.969.0591

email: sales@triadvinyl.com • www.triadvinyl.com